



## Airways, hila, and mediastinum

The hilum—common abnormalities

---

---

---

---

---

### What will I gain from this video?

After watching this video, you will be able to confidently identify common hilar abnormalities.

---

---

---

---

---

### The radiological hilum is abnormal when:

- The grayscale image of the hilum is too white (i.e., the density of the hilum is increased).

---

---

---

---

---

**The radiological hilum is abnormal when:**

- The grayscale image of the hilum is too white (i.e., the density of the hilum is increased).
- The size of the hilar shadow is enlarged or reduced.

---

---

---

---

---

**The radiological hilum is abnormal when:**

- The grayscale image of the hilum is too white (i.e., the density of the hilum is increased).
- The size of the hilar shadow is enlarged or reduced.
- The position of the hilum is shifted.

---

---

---

---

---

**The radiological hilum is abnormal when:**

- The grayscale image of the hilum is too white (i.e., the density of the hilum is increased).
- The size of the hilar shadow is enlarged or reduced.
- The position of the hilum is shifted.
- The shape of the hilum is distorted.

---

---

---

---

---

### The radiological hilum is abnormal when:

- The grayscale image of the hilum is too white (i.e., the density of the hilum is increased).
- The size of the hilar shadow is enlarged or reduced.
- The position of the hilum is shifted.
- The shape of the hilum is distorted.
- Special case: the hilar boundaries are ill-defined (hilar haze).

---

---

---

---

---

---

### Bilateral hilar enlargement:

- Enlargement of the pulmonary arteries (as seen with pulmonary arterial hypertension)



*Pulmonary hypertension*

---

---

---

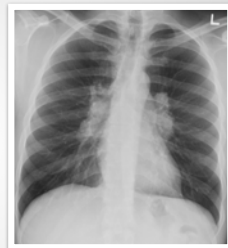
---

---

---

### Bilateral hilar enlargement:

- Enlargement of the pulmonary arteries (as seen with pulmonary arterial hypertension)
- Bilateral hilar lymph node enlargement (lymphoma, metastasis), sarcoidosis, silicosis, infected (occasionally)



*Sarcoidosis*

---

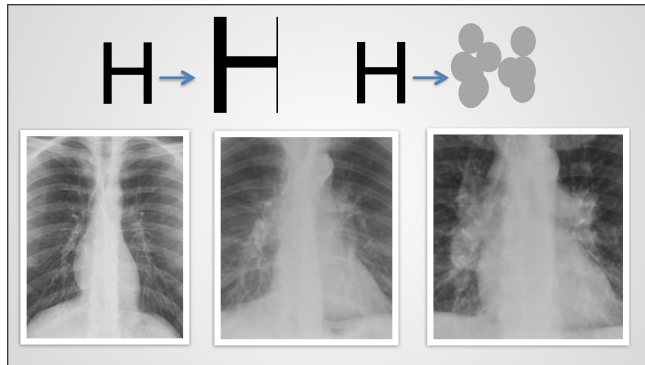
---

---

---

---

---



---

---

---

---

---

---

**Unilateral hilar enlargement:**

- Tumor
- Enlarged nodes
- Vascular



*Cancer*

---

---

---

---

---

---

**Change in hilar position**



---

---

---

---

---

---

Change in hilar shape



---

---

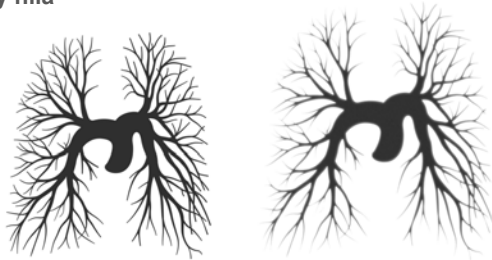
---

---

---

---

Hazy hila



---

---

---

---

---

---

Hazy hila



---

---

---

---

---

---

**Radiological signs  
relating to the hilum:**

Hilar overlay sign



---

---

---

---

---

---

**Radiological signs  
relating to the hilum:**

H-sign



---

---

---

---

---

---

**When looking for hilar pathology, look for:**

- Grayscale change
- Change in size and position of the hilum

---

---

---

---

---

---

**When looking for hilar pathology, look for:**

- Grayscale change
- Change in size and position of the hilum

Unilateral hilar enlargement: suspect tumor

---

---

---

---

---

**When looking for hilar pathology, look for:**

- Grayscale change
- Change in size and position of the hilum.

Unilateral hilar enlargement: suspect tumor

Bilateral hilar enlargement: suspect pulmonary hypertension or adenopathy (sarcoid, lymphoma, infection)

---

---

---

---

---